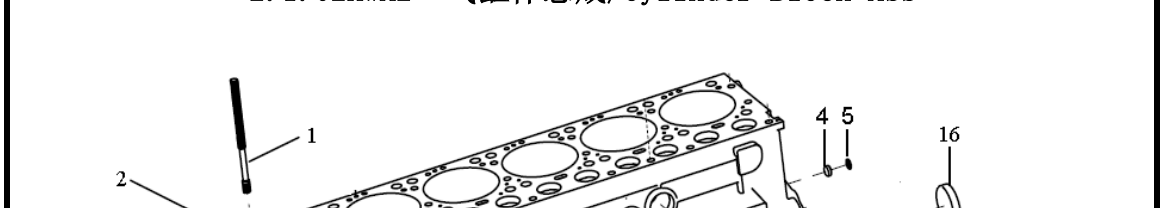


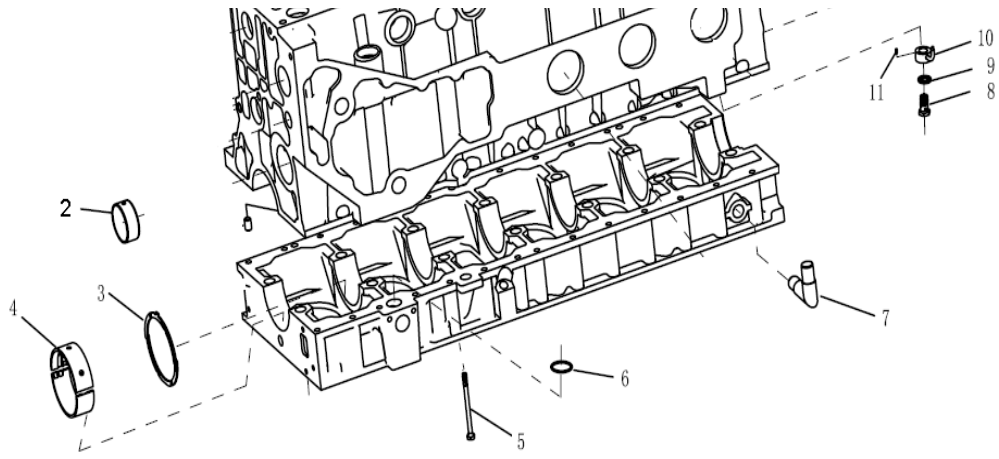
2. 1. 02HWA2 气缸体总成/Cylinder Block Ass

序号 No.	零部件图号 Part No.	名称	Part Name	数量 Qty	备注 Remark
0	61500010383	气缸体总成	Cylinder block asse.	1	Inc. 1-16
0	61500010385	气缸体总成后取力用	Cylinder block asse.for PTO	1	Option,For engine PTO Inc. 1-16
0	61500010393	气缸体总成装EVB用	Cylinder block asse.for EVB	1	Option,For EVB Inc. 1-16
0	61500010373	气缸体总成用于A7欧2机	Cylinder block asse.	1	FOR A7 47/69/87/62
0	61500010363	气缸体总成A7欧2带EVB	Cylinder block ass.for EVB	1	FOR A7,EVB
1	VG1500010185	气缸盖螺栓	Stud	21	
2	61500010356B	气缸体	Cylinder block	1	
2	61500010356A	气缸体后取力用	Cylinder block for PTO	1	Option,For engine PTO Inc. 1-16
2	61560010096	气缸体装EVB用	Cylinder block for EVB	1	Option,For engine PTO Inc. 1-16
2	61500010366B	气缸体用于A7欧2机	Cylinder block	1	FOR A747/69/87/62
2	61500010356C	气缸体用于A7欧2+EVB	Cylinder block for EVB	1	FOR A7,EVB
3	190003982121	碗形塞	Core plug	4	
4	190003989480	碗形塞	Core plug	2	
5	VG407010046	密封圈	Washer	2	
6	190003989204	碗形塞	Core plug	1	
7	VG1560010029	凸轮轴衬套	Camshaft bush	5	
7a	VG1096010010A	凸轮轴衬套	Camshaft bush	1	
8	90003901604A	圆柱销	Cylinder pin	2	
9	Q5211220	圆柱销	Cylinder pin	1	
10	61500010366C	曲轴箱	Crankcase	1	

2. 1. 02HWA2 气缸体总成/Cylinder Block Ass



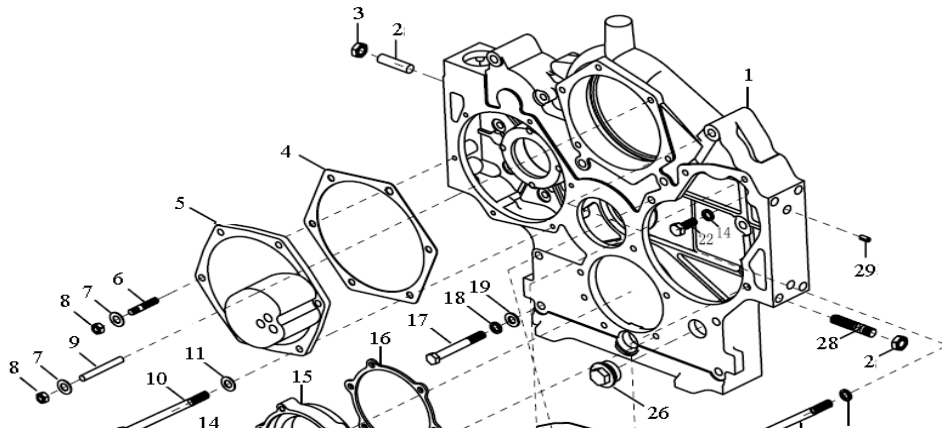


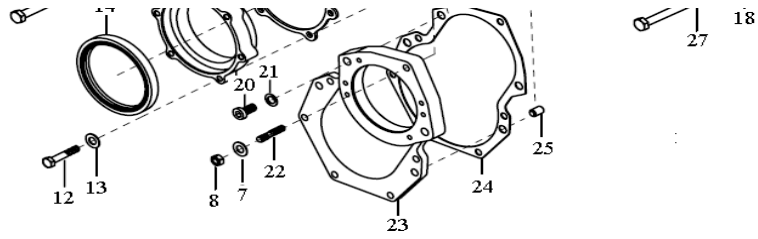


### 2. 1. 03HWA2 气缸体装配件/Parts in cylinder Block

序号 No.	零部件图号 Part No.	名称	Part Name	数量 Qty	备注 Remark
1	VG1540010006	气缸套	Cylinder liner	6	
2	VG2600010990	凸轮轴衬套	Camshaft bush	1	
3	VG1500010125	止推片付	Thrust washer pair	2	
4	VG1500010046	主轴瓦付	Bearing shell pair	7	
5	190003802493	六角头螺栓	Screw	27	
6	VG1400010032	密封圈	Washer	2	
7	VG2600070097	回油管	Return oil pipe	1	
8	190003962621	空心螺栓	Female Screw	6	
9	VG9003080005	复合密封垫圈	Sealing washer	6	
10	VG2600010659	喷嘴总成用于47、69机	Spraying nozzle asse.for WD615.47/69	6	for WD615.47/69
10	VG1560010090	喷嘴总成用于87、62机	Spraying nozzle asse.for WD615.87/62	6	for WD615.87/62
11	190003909603	弹性圆柱销	Spring cylinder pin	6	
12	VG1047010050	后油封总成(迷宫式)	Gasket(back)	1	
13	VG1460070011	主油道后螺塞	Plug	1	
14	VG2600010735	复合垫圈	Washer	2	
15	190003909626	弹性圆柱销	Spring cylinder pin	6	
16	190003901604	圆柱销	Cylinder pin	6	

### 2. 1. 04HWA2 齿轮室/Gear case

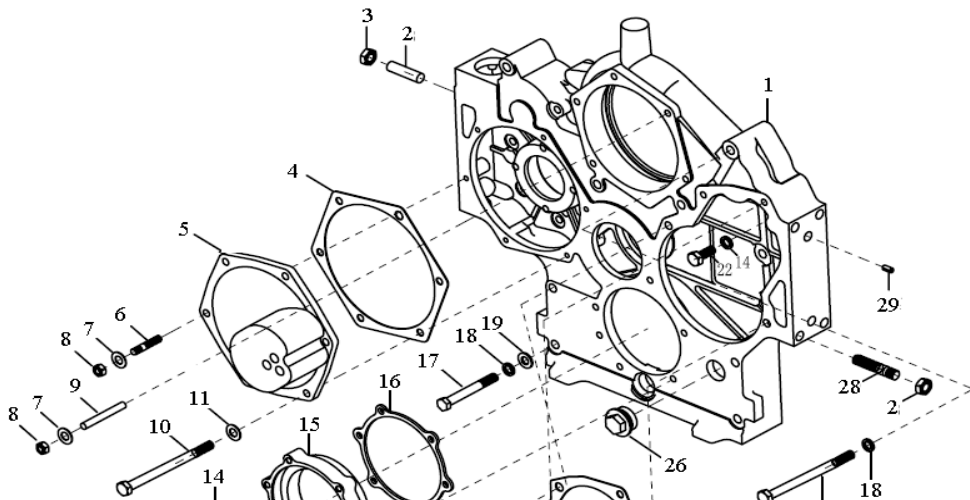




2.1. 04HWA2 齿轮室/Gear case

序号 No.	零部件图号 Part No.	名称	Part Name	数量 Qty	备注 Remark
1	61557010008	双缸空压机正时齿轮室	Gear case	1	
2	Q1201245F3	双头螺柱	Stud	2	
3	190003888453	螺母	Nut	8	
4	VG14010040	空压机齿轮盖垫片	Gasket	1	
5	VG2600010830	空压机齿轮盖	Compressor gear cover	1	
5	VG2600010170	空压机齿轮盖用于金王子机型	Compressor gear cover for HH62/87/69	1	for HH62/87/69
6	190003813429	双头螺柱	Stud	14	
7	190003932023	波形弹性垫圈	Spring washer	19	
8	190003871252	1型六角螺母	Nut	17	
9	190003813467	双头螺柱	Stud	2	
10	190003802576	六角头螺栓	Screw	1	
11	190003932024	波形弹性垫圈	Spring washer	1	
12	190011260039	六角头螺栓	Screw	6	
13	VG9003080001	复合密封垫圈	Washer	6	
14	VG1047010038	前油封	Oil sealing(front)	1	
15	VG2600010928	前油封座	Oil sealing seat (front)	1	
16	VG2600010934	前油封座垫片	Gasket (front)	1	
17	190003800571	六角头螺栓	Screw	1	
18	190003931122	弹簧垫圈	Spring washer	10	
19	190003930271	平垫圈	Washer	2	
20	190003862524	内六角圆柱头螺钉	Screw	2	
21	190003932025	鞍形弹性垫圈	Spring washer	2	
22	190003813443	双头螺柱	Stud	1	
23	VG1500010008A	凸轮轴齿轮盖	Camshaft gear cover	1	

2.1. 04HWA2 齿轮室/Gear case



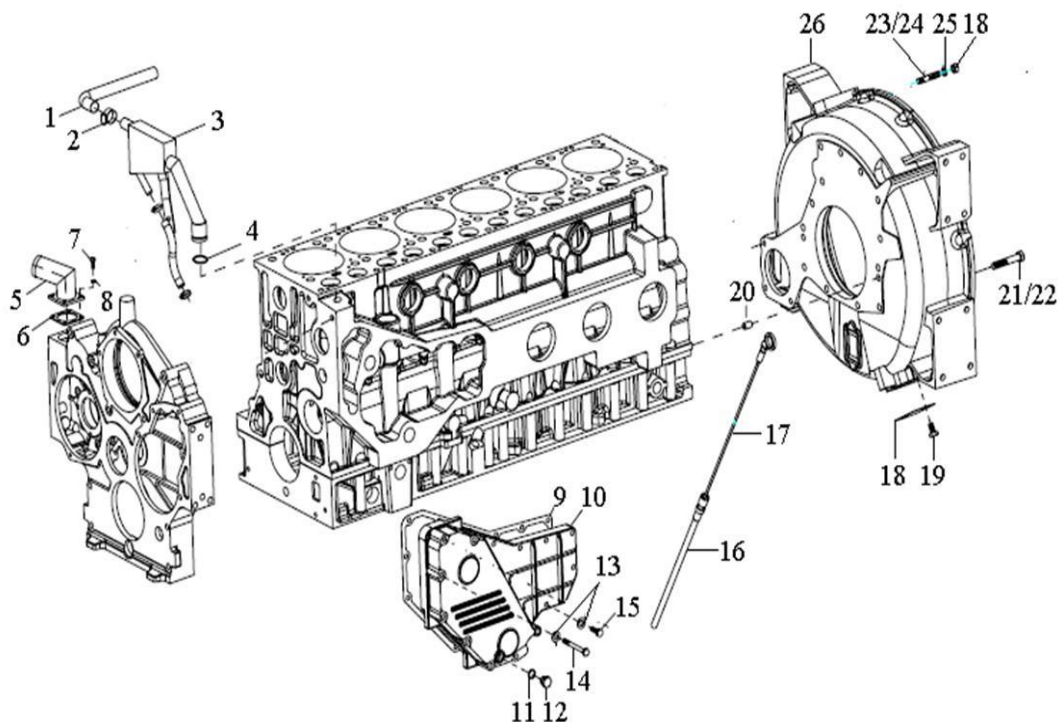




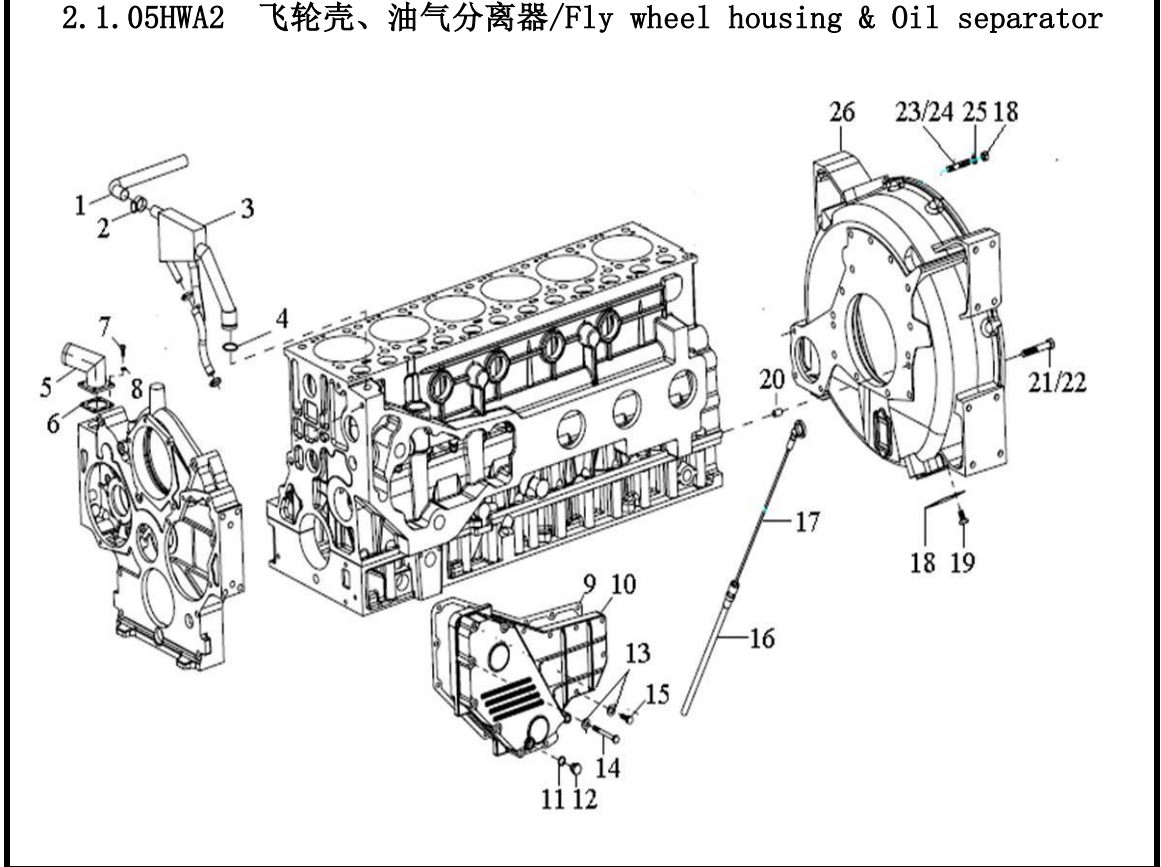
2. 1. 05HWA2 飞轮壳、油气分离器/Fly wheel housing & Oil separator

序号 No.	零部件图号 Part No.	名称	Part Name	数量 Qty	备注 Remark
1	VG12G00040038	带纤维夹层的橡胶软管	Rubber hose	1	
2	190003989340	软管卡箍	Hose clip	1	
3	VG1095010050	油气分离器总成	Oil separator	1	
4	Q734B2650265	O形橡胶密封圈	O-ring	1	
5	VG1095010040	加油短管组件	Oil pipe	1	
5	VG1038010029	加油短管组件	Oil pipe for A747/69/87/62	1	FOR A747/69/87/62
6	VG14010086	加油短管垫片	Gasket	1	
7	190003802321	六角头螺栓	Screw	4	
8	190003931082	轻型弹簧垫圈	Spring washer	5	
9	VG1540010015A	机油冷却器盖垫片	Gasket	1	
10	VG1540010014A	机油冷却器盖	Cover	1	
11	VG9003080005	复合密封垫圈	Washer	1	
12	190003962020	轻型六角头圆柱螺塞	Plug	1	
13	190003932023	波形弹性垫圈	Spring washer	40	
14	190003800467	六角头螺栓	Screw	7	
15	190003802437	六角头螺栓	Screw	6	
16	VG2600010705	机油尺管下组件	Oil dipstick-lower	1	
16	VG2600019077	机油尺管下组件用于金王子机型	Oil dipstick-lower for HH62/87/69	1	for HH62/87/69
17	VG1500010600	油尺管上组件总成	Oil dipstick-upper	1	

2. 1. 05HWA2 飞轮壳、油气分离器/Fly wheel housing & Oil separator



2. 1. 05HWA2 飞轮壳、油气分离器/Fly wheel housing & Oil separator					
序号	零部件图号	名称	Part Name	数量	备注
No.	Part No.			Qty	Remark
17	VG1500010500	油尺管上组件总成用于金王子机型	Oil dipstick-upper	1	for HH62/87/69
18	VG1800210011	观察孔盖	Inspector cover	1	
19	190003802511	六角头螺栓	Screw	2	
20	190003901604	圆柱销	Cylinder pin	2	
21	VG1500010062	飞轮壳螺栓	Screw	7	
22	VG1500010101	飞轮壳螺栓	Screw	6	
23	VG9003813543	双头螺柱	Stud	10	
24	190003813544	双头螺柱	Stud	2	
25	190003931122	弹簧垫圈	Spring washer	12	
26	AZ1500010012	飞轮壳	Fly wheel housing	1	
	VG1500010174	无纤维夹层的橡胶软管	Rubber hose	1	
	VG2600010446	机油标尺的橡胶软管	Hose for oil dipsticle	1	
	VG2600010193	铭牌	Name plate	1	
	VG2600010791	标牌铆钉	Rivet	4	
	90003989301	软管卡箍	Clip	2	
	VG1095010034	带纤维夹层橡胶软管	Hose	1	
	VG2600010447	单管夹子	Clip	1	
	VG2600010445	单管夹子	Clip	1	
	VG288730061	O型密封圈	O seal ring	1	
	VG29135	转向泵封口	Seal	1	

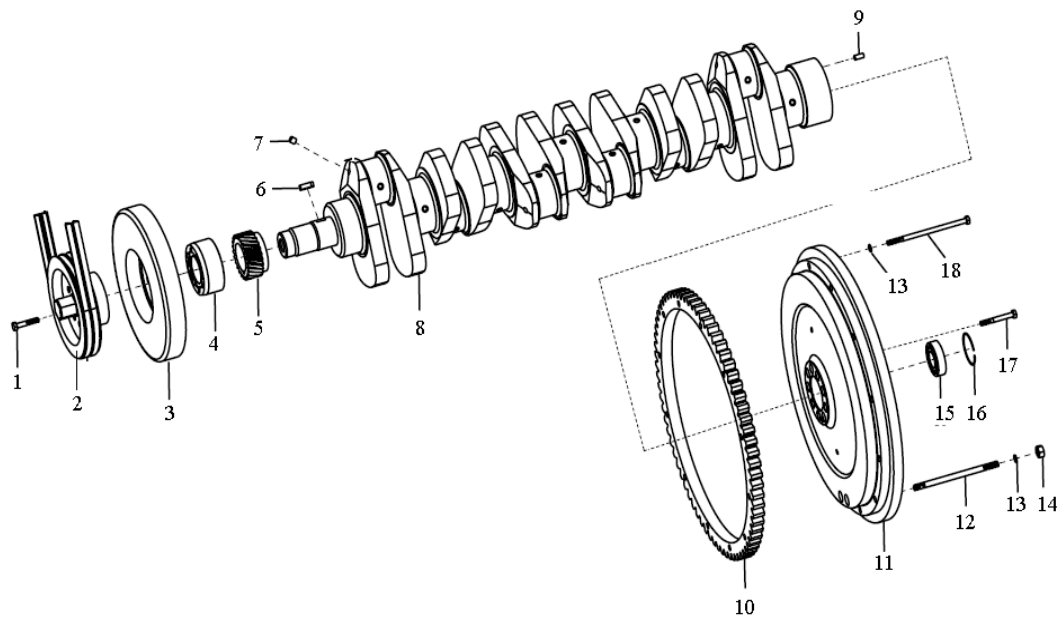


2. 1. 05HWA2 飞轮壳、油气分离器/Fly wheel housing & Oil separator					
序号	零部件图号	名称	Part Name	数量	备注



3	VG1540020003	减振器	Vibration damper	1	
—	161560020029	曲轴总成用于47、69机	Crankshaft ass.for WD615.4	1	Inc. 4-9for WD615.47/69
—	161500020071	曲轴总成用于87、62机	Crankshaft ass.for WD615.8	1	Inc. 4-9for WD615.87/62
4	VG1500020070	法兰	Flange	1	
5	VG14020038	曲轴齿轮	Crankshaft gear	1	
6	Q5510828	普通平键	Key	1	
7	VG2600020311	油孔堵头	Oil hole plug	6	
8	161560020024	曲轴	WD615.47/69	1	for WD615.47/69
8	161500020012	曲轴	WD615.87/62	1	for WD615.87/62
9	190003901418	圆柱销	Cylinder pin	1	
10	VG2600020208	飞轮齿圈	Flywheel ring gear	1	
11	AZ1500020220A	47机飞轮	Flywheel for WD615.47	1	for WD615.47
11	AZ1092020002	飞轮WD615. 69/87/62	Flywheel for WD615. 69/87/62	1	For WD615.69/87/62
11	AZ1500029023A	47机后取力飞轮	Flywheel for PTO&WD615.47	1	For PTO&WD615.47
11	AZ1092020004	WD615. 69/87/62机后取力飞轮	HW69/87/62Flywheel for PTO	1	For PTO&WD615.47
12	190003813571	双头螺柱	Stud	2	
13	190003932024	波形弹性垫圈	Spring washer	12	
14	190003871305	1型六角螺母	Nut	2	

### 2.1.06HWA2 曲轴及飞轮/Crankshaft and Flywheel



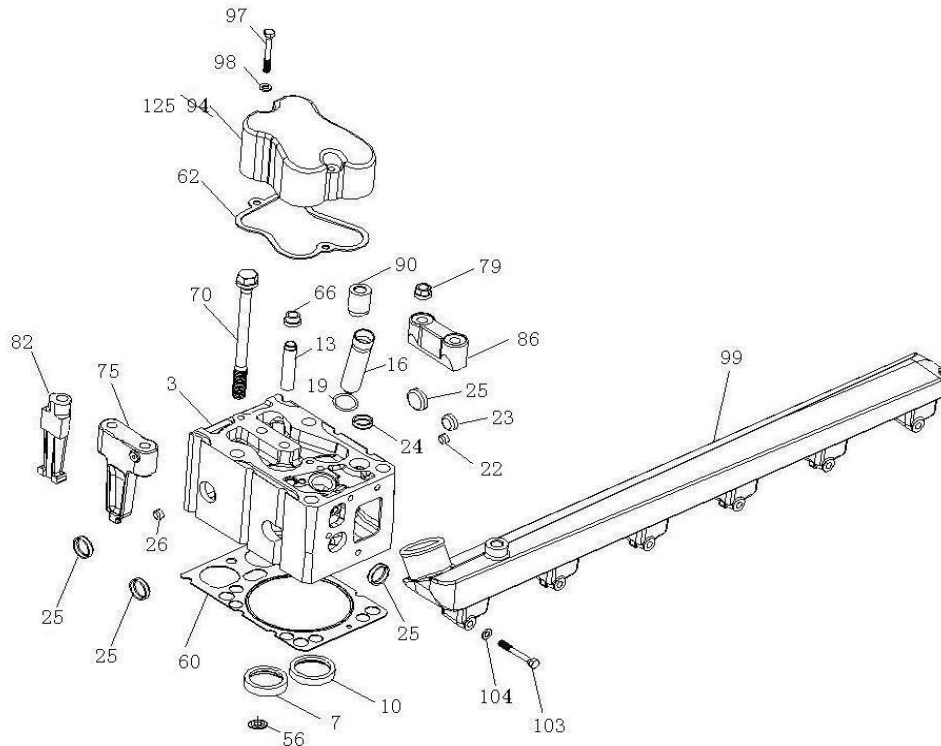
### 2.1.06HWA2 曲轴及飞轮/Crankshaft and Flywheel

序号	零部件图号	名称	Part Name	数量	备注
No.	Part No.			Qty	Remark
15	190003311416	球轴承	Ball bearing	1	
16	190003934310	孔用弹性挡圈	Washer	1	
17	VG1500020046	六角头螺栓	Screw	9	
17	VG1500029046	六角头螺栓 (带后取力)	Screw (with PTO)	9	For PTO
18	190003800579	六角头螺栓	Screw	10	



5	161500030009	连杆总成	Connecting rod ass.	6	
5,1	161500030008	连杆体	Connecting rod	1	
5,2	161500030022	连杆盖	Connecting rod cover	1	
5,3	VG1500030023	连杆螺栓	Screw	2	
5,4	VG1500030077	连杆衬套	Bush	1	
6	VG1560037034	连杆轴瓦上瓦	Bearing shell pair(upper)	6	
7	VG1560037033	连杆轴瓦下瓦	Bearing shell pair(lower)	6	

### 2.1.08HWA2 气缸盖/Cylinder Head

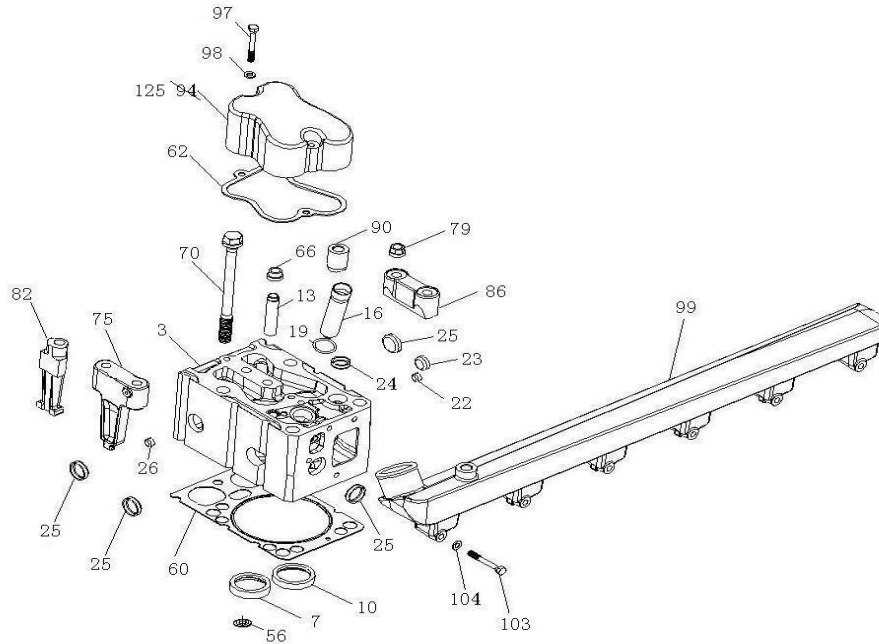


### 2.1.08HWA2 气缸盖/Cylinder Head

序号 No.	零部件图号 Part No.	名称	Part Name	数量 Qty	备注 Remark
1	161560040058	气缸盖总成	Cylinder head ass.	6	Inc. 3-25
3	61560040040A	气缸盖	Cylinder head	6	
3	61560040060	气缸盖装EVB用	Cylinder head for EVB	6	option,for EVB
7	VG1560040037	排气门座	Exhaust valve seat	6	
10	VG1560040057	进气门座	Intake valve seat	6	
13	VG1560040031	气门导管	Valve guide	2	
16	VG1560040049	喷油器衬套	Bush	6	
19	VG1406060010	环状密封圈	Sealing washer	6	
22	90003989277	碗形塞	Core plug	6	
23	90003989721	碗形塞	Core plug	6	
24	90003989725	碗形塞	Core plug	6	

25	90003989294	碗形塞	Core plug	24	
26	VG1540040011	油孔堵塞	Oil hole plug	6	
56	VG1500040014	排气门弹簧下座	Spring seat	6	
60	VG1500040049	气缸盖衬垫	Gasket	6	
60	VG1500040065	气缸盖衬垫装EVB用	Gasket for EVB	6	option,for EVB
62	VG14040021	气缸盖罩衬垫	Gasket	6	
66	VG1560040032	气门杆密封套	Sleeve	12	
70	VG1500040023	气缸盖主螺栓	Screw	24	
75	VG1500040009	夹紧块	Block	2	

### 2.1.08HWA2 气缸盖/Cylinder Head

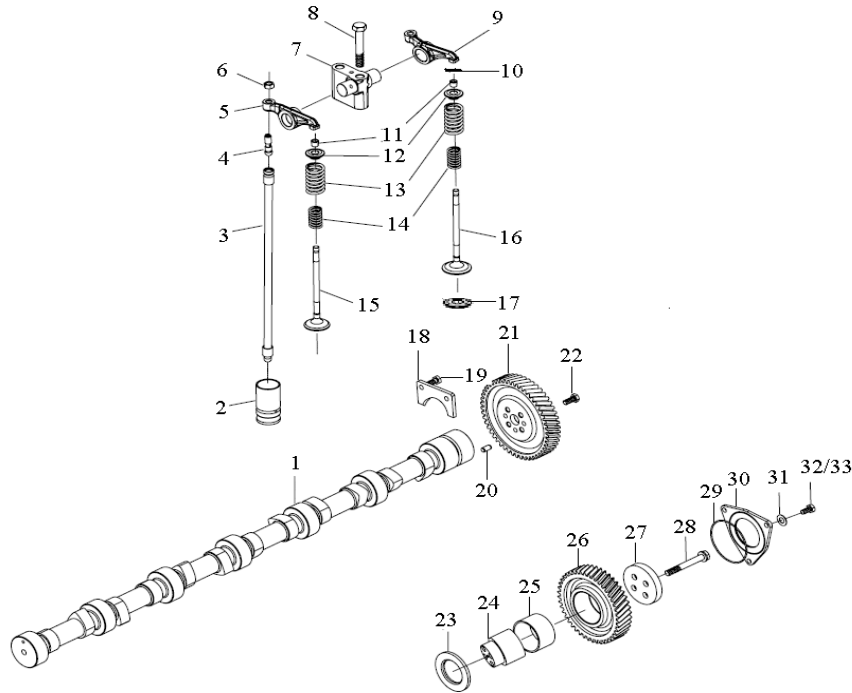


### 2.1.08HWA2 气缸盖/Cylinder Head

序号	零部件图号	名称	Part Name	数量	备注
No.	Part No.			Qty	Remark
79	VG1200040034	带肩螺母	Nut	21	
82	VG1200040027	夹紧块	Block	1	
90	VG1200040023A	夹紧块	Block	5	
97	190003800466	六角头螺栓	Screw	12	
98	190003932023	波形弹性垫圈	Spring washer	12	
99	VG1500040104	出水管	Water outlet pipe	1	
103	190003800466	六角头螺栓	Screw	12	
104	190003932023	波形弹性垫圈	Spring washer	12	
105	190003813429	双头螺柱	Stud	2	
106	190003813467	双头螺柱	Stud	2	
107	190003871252	1型六角螺母	Nut	4	
108	190014040007	平垫圈	Washer	4	
110	VG9003080003	复合密封垫圈	Washer	1	
113	190003962014	六角头螺塞	Plug	1	
115	190003932023	波形弹性垫圈	Spring washer	12	
125	VG14040065	气缸盖罩	Cylinder head cover	6	
125	VG1500040066	气缸盖罩 装EVB用	Cylinder head cover for EV	6	option,for EVB

	VG29114	堵盖	Plug	1	
	VG29118	堵盖	Plug	1	

### 2. 1. 09HWA2 配气机构/Valve-Gear Mechanism

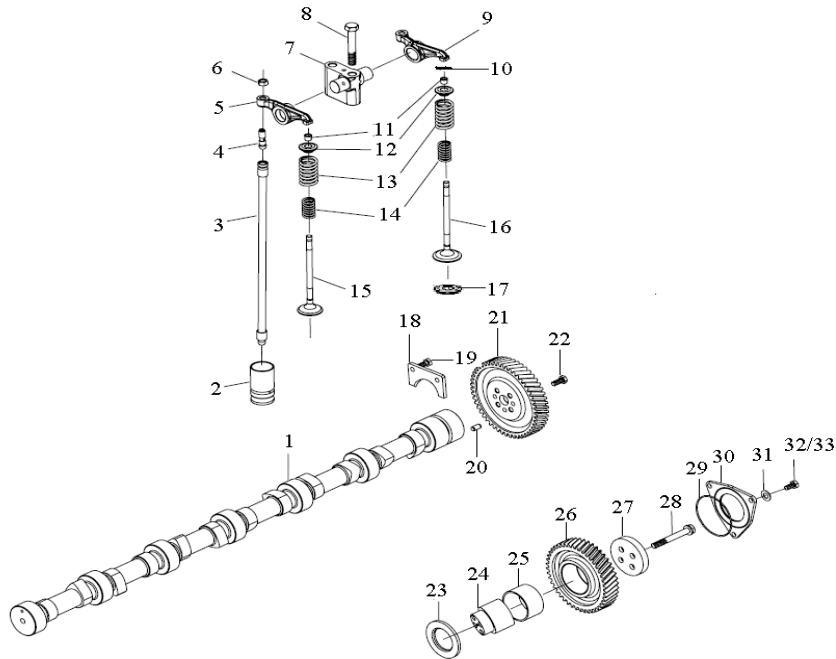


### 2. 1. 09HWA2 配气机构/Valve-Gear Mechanism

序号 No.	零部件图号 Part No.	名称	Part Name	数量 Qty	备注 Remark
0	VG1500050097	凸轮轴总成	Camshaft	1	
1	VG1500050096	凸轮轴	Camshaft	1	
2	VG1500050032	气门挺柱	Valve tappet	12	
3	VG1092050020	气门推杆总成	Push rod assembly	12	
3,1	VG1092050019	气门推杆杆身	Rod body	1	
3,2	VG1096050031	气门推杆凹头	Head	1	
3,3	VG1096050033	气门推杆球头	Ball end	1	
4	VG14050010	气门间隙调整螺钉	Clearance adjust Screw in v	12	
4A	VG1500050017	排气门间隙调整螺钉装EVB用	Clearance adjust Screw in exhaust valve for EVB	6	option,for EVB
5	VG14050049	排气门摇臂	Rocker of exhaust valve	6	
5	VG1500050030	排气门摇臂 装EVB用	Rocker of exhaust valve for EVB	6	option,for EVB
6	VG2130050065	气门间隙调整螺母	Nut	12	
7	VG14050119	气门摇臂座	Rocker bracket	6	
7	VG1500050120	气门摇臂座 装EVB用	Rocker bracket for EVB	6	option,for EVB
8	190003802655	六角头螺栓	Screw	12	
8	Q150B12100TF2	六角头螺栓 装EVB用	Screw for EVB	12	option,for EVB

9	VG14050048	进气门摇臂	Rocker of intake valve	6	
10	VG1500050105	气门帽	Valve cap	12	
11	VG1500050025	气门锁夹	Valve cone	24	

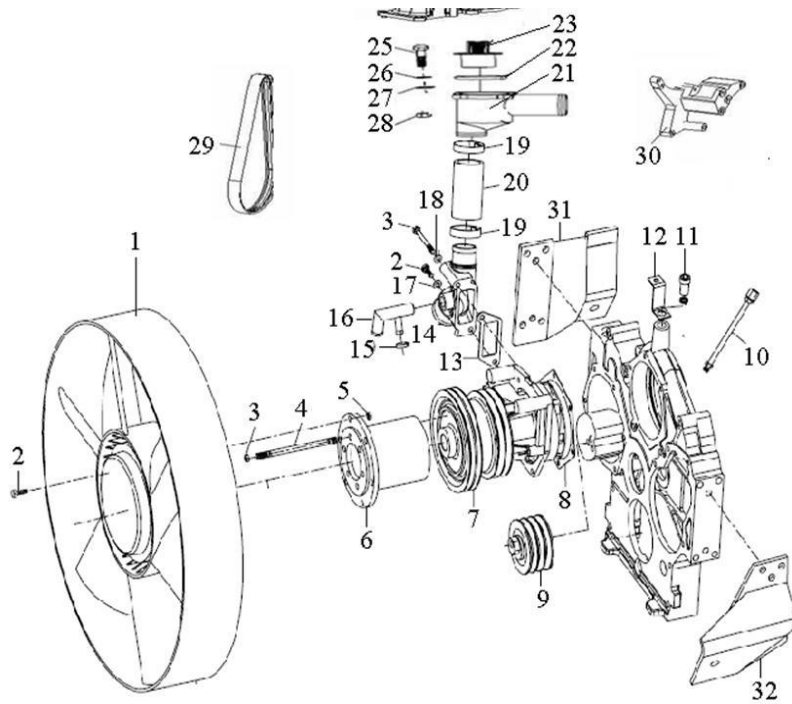
### 2. 1. 09HWA2 配气机构/Valve-Gear Mechanism



### 2. 1. 09HWA2 配气机构/Valve-Gear Mechanism

序号 No.	零部件图号 Part No.	名称	Part Name	数量 Qty	备注 Remark
12	VG1500050109	气门弹簧上座	Spring seat - upper	12	
13	VG1500050002	气门外弹簧	Valve spring (outside)	12	
14	VG1500050001	气门内弹簧	Valve spring (inside)	12	
15	VG1560050041	排气门用于47、69机	Exhaust valve for WD615.4	6	
15	VG1560050027	排气门用于62、87机	Exhaust valve for WD615.6	6	
16	VG1560051001	进气门	Inlet valve	6	
17	VG14050017	进气门弹簧下座	Spring seat - lower	6	
18	VG14050133	凸轮轴止推片	Thrust plate	1	
19	190003802399	六角头螺栓	Screw	2	
20	190003901409	圆柱销	Cylinder pin	1	
21	VG14050053	凸轮轴正时齿轮	Tining gear	1	
22	190003802443	六角头螺栓	Screw	4	
23	VG1540059032	中间齿轮垫片	Middle gear gasket	1	
24	VG1540059031	中间齿轮轴	Middle gear shaft	1	
—	VG1560050053	中间齿轮总成	Middle gear ass.	1	incl. 25~26
25	VG1560050054	衬套	Bush	1	
26	VG1560050052	中间齿轮	Middle gear	1	
27	VG1560050045	挡板	Plate	1	
28	VG1560050059	六角头螺栓	Screw	4	
29	190003120602	密封圈	Sealing ring	1	

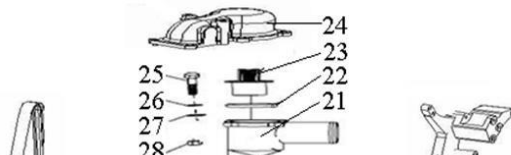


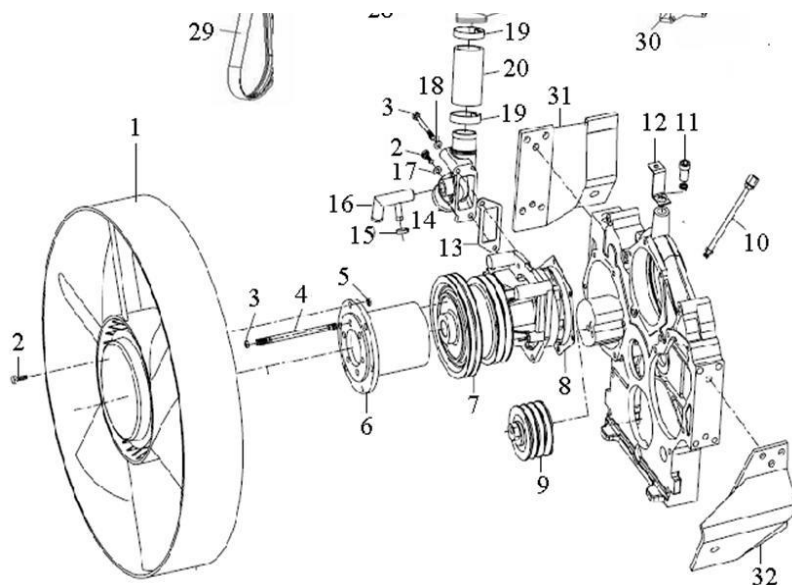


2.1.10HWA2 冷却系统/Cooling System

序号 No.	零部件图号 Part No.	名称	Part Name	数量 Qty	备注 Remark
1	VG1500060402	Φ640硅油风扇	Si-Viscous fan-Φ640	1	Optional For HW47/69,A7/69,HH69/87/62,ST47/69
1	VG2600060446	Φ640环形风扇（刚性）	Rigid fan-Φ640	1	For HW47/69,A7/69,HH69/87/62,ST47/69
1	VG1500060447	Φ590环形风扇（刚性）用于HW62/87	Rigid fan-Φ590 for HW62/87	1	Optional
2	190003802424	六角头螺栓	Screw	7	
3	190003888452	锁紧螺母	Nut	6	
4	190003810020	双头螺柱（硅油风扇用）	Stud for Si-Viscous fan	6	Optional
4	190003813148	双头螺柱（刚性风扇用）	Stud for Rigid fan	6	Optional
5	190003888451	锁紧螺母	Nut	6	
6	VG1500060241	中间法兰（硅油风扇用）	Flange for Si-Viscous fan	1	Optional for HW&ST
6	VG1500060240	中间法兰（刚性风扇用）	Flange for Rigid fan	1	Optional for HW&ST
6	VG1062060131	中间法兰（金王子硅油风扇用）	Flange for Si-Viscous fan	1	Optional for HH
6	VG1062060130A	中间法兰（金王子刚性风扇用）	Flange for Rigid fan	1	Optional for HH
6	VG1038060243	中间法兰（硅油风扇用）	Flange for Si-Viscous fan	1	for A7/47,Optional
6	VG1034060242	中间法兰（硅油风扇用）	Flange for Si-Viscous fan	1	for A7/69
7	VG1500060051	水泵总成	Water pump assembly	1	
7	VG1062060351	水泵总成用于HH69/87/62	Water pump asse.for HH69/87/62	1	for HH69/87/62
8	VG140608	水泵密封垫	Gasket	1	
8	VG1500060108	水泵密封垫用于HH69/87/62	Gasket	1	for HH69/87/62
9	VG2600060313	自动张紧轮	Tensioning roller	1	
9	VG1062060113	张紧轮用于HH69/87/62	Tensioning roller for HH69/87/62	2	for HH69/87/62

2.1.10HWA2 冷却系统/Cooling System

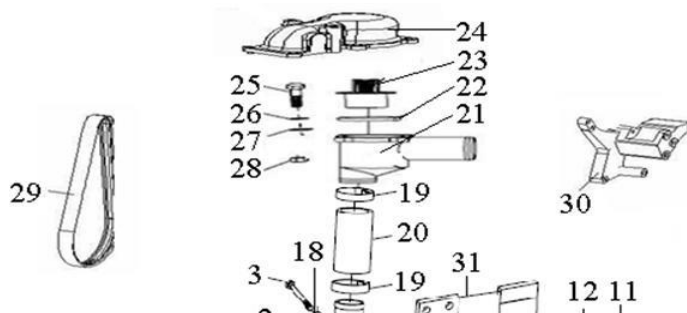


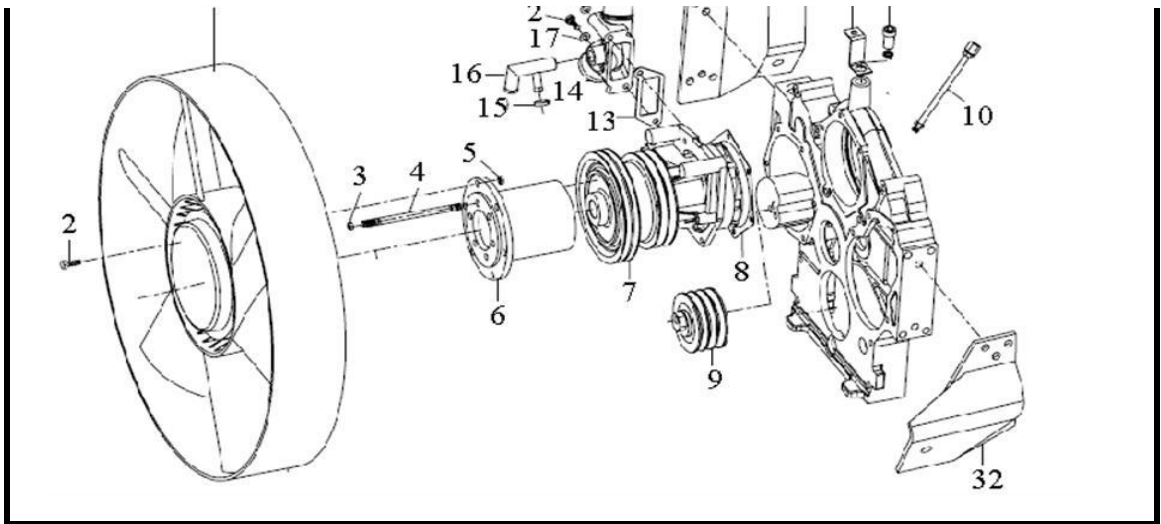


### 2.1. 10HWA2 冷却系统/Cooling System

序号 No.	零部件图号 Part No.	名称	Part Name	数量 Qty	备注 Remark
9A	VG1062060200	水泵张紧轮支架用于HH69/87/62	Bracket for roller on HH69/87/62	2	for HH69/87/62
9B	Q1861280TF2	六角法兰面螺栓用于HH69/87/62	Screw for HH69/87/62	1	for HH69/87/62
10	VG2600060460	水泵加黄油装置	Grease nozzle	1	
11	Q218B1625	内六角圆柱头螺钉	Screw	1	
13	VG14060024	水管接头垫片	Gasket	1	
14	VG1560060023	水管接头	Connector	1	
15	190003989336	软管卡箍	Hose clip	4	
16	VG1560060004	回水管接头组件	Pipe connecting piece	1	
17	190003932023	波形弹性垫圈	Spring washer	2	
18	190014070002	小垫圈	Washer	1	
19	190003989308	软管卡箍	Hose clip	2	
20	VG61000060276	胶管	Rubber pipe	1	
21a	VG1047060001/1	调温器总成 (80度)	Thermostat ass.80°C	1	Inc 21-28
21b	VG1047060001/2	调温器总成 (80度)	Thermostat ass.80°C	1	Inc 21-28
21c	VG1047060005/1	调温器总成 (71度)	Thermostat ass.71°C	1	Inc 21-28 Optional
21d	VG1047060005/2	调温器总成 (71度)	Thermostat ass.71°C	1	Inc 21-28 Optional
21,1	VG1500061203	节温器壳体	Housing	1	for 21a/21c
21,1	VG1095061204	节温器壳体	Housing	1	for 21b/21d
22	VG1047060004	水封圈	Washer	1	for 21a/21c
22	VG1047060014	水封圈	Washer	1	for 21b/21d

### 2.1. 10HWA2 冷却系统/Cooling System

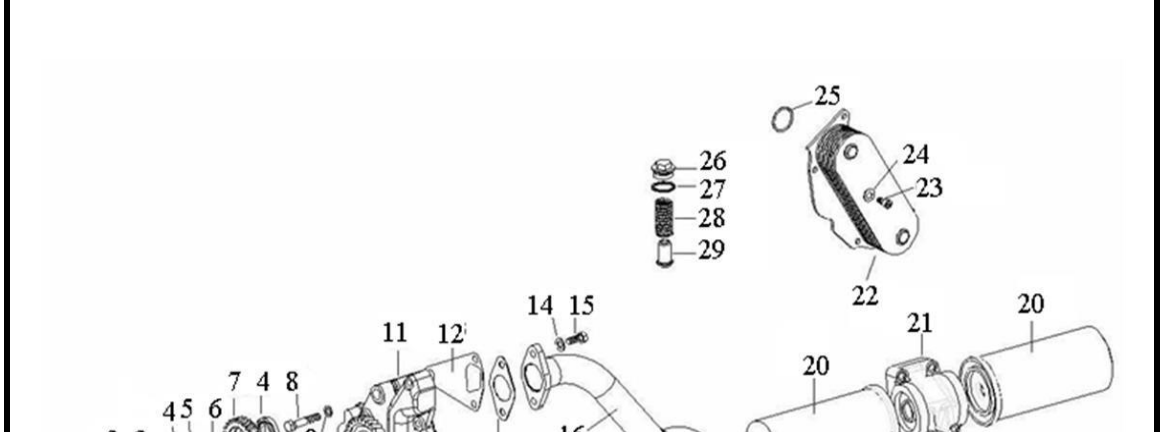


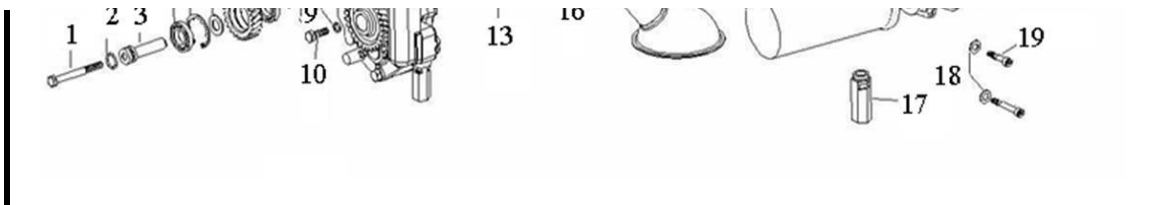


### 2.1.10HWA2 冷却系统/Cooling System

序号 No.	零部件图号 Part No.	名称	Part Name	数量 Qty	备注 Remark
23	VG1047060002	节温器芯 (80度)	Thermostat core 80°C	1	for 21a
23	VG1047060012	节温器芯 (80度)	Thermostat core 80°C	1	for 21c
23	VG1047060003	节温器芯 (71度)	Thermostat core 71°C	1	for 21b Optional
23	VG1047060013	节温器芯 (71度)	Thermostat core 71°C	1	for 21d Optional
24	VG1500040105	出水管接管	Pipe	1	
25	Q150B0830	六角头螺栓	Screw	4	
26	Q40308	弹簧垫圈	Spring washer	4	
27	Q40108	平垫圈	Washer	4	
28	Q340B08	1型六角螺母	Nut	4	
29	VG2600020253	汽车多楔带(水泵皮带)	Belt for water pump	1	
29	VG1062060016	汽车多楔带(水泵皮带)	Belt for water pump	1	for HH
29	VG1062060017	汽车多楔带(风扇皮带)	Belt for fan	1	for HH
30	VG1500130018A	空调托架	Bracket for air conditioner	1	
30	VG1062130018	空调托架	Bracket for air conditioner	1	for HH
31	VG1095060009	右支架	Bracket -right	1	
31	VG1095060119	右支架	Bracket -right	1	for HH
32	VG1095060006	左支架	Bracket -left	1	
32	VG1095060116	左支架	Bracket -left	1	for HH

### 2.1.11HWA2 机油泵和机油滤清器/Oil Pump and Oil Filter

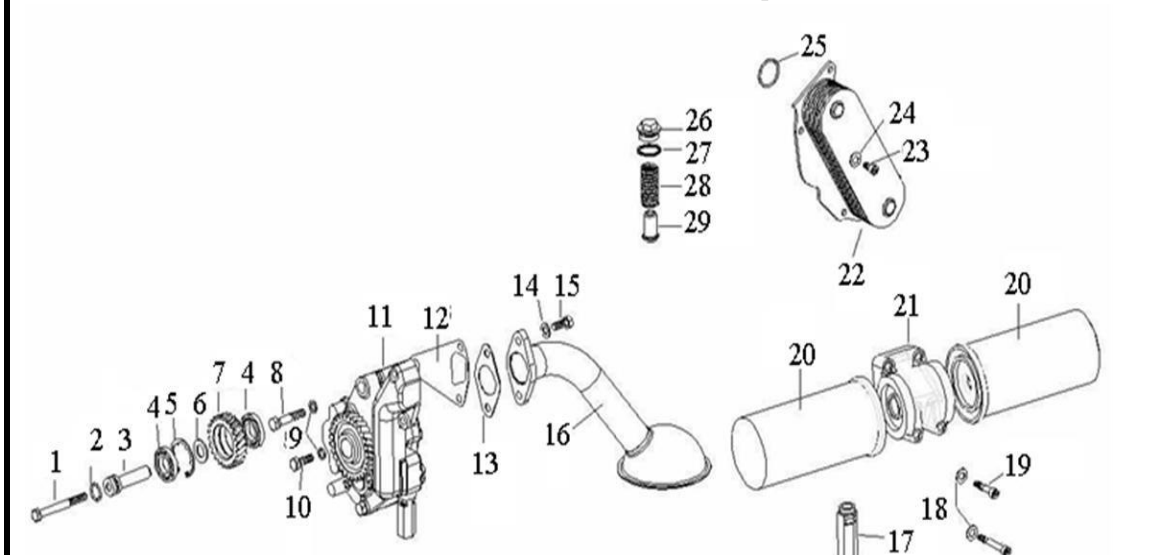




2.1.11HWA2 机油泵和机油滤清器/Oil Pump and Oil Filter

序号 No.	零部件图号 Part No.	名称	Part Name	数量 Qty	备注 Remark
1	190003802578	六角头螺栓	Screw	1	
2	VG14070155	密封圈	Washer	1	
3	VG14070056	中间齿轮轴	Shaft	1	
4	190003311410	向心球轴承	Ball bearing	2	
5	190003934732	带凸齿的孔用挡圈	Ring	1	
6	VG14070049	中间隔圈	Ring	1	
7	VG14070061	机油泵中间齿轮	Gear	1	
8	190003800551	六角头螺栓	Screw	1	
9	190003931122	弹簧垫圈	Spring washer	2	
10	190003802527	六角头螺栓	Screw	1	
11	VG1500070021	45mm加宽机油泵	Oil pump	1	
11,01	VG14070060	机油泵驱动齿轮	Gear	1	
11,02	VG1500070029	机油泵前盖	Cover -front	1	
11,03	VG1500070015	机油泵壳体	Housing	1	
11,04	VG1500070024	机油泵后盖	Cover -rear	1	
11,05	VG1047070203	机油泵齿轮总成	Gear	1	
11,06	VG1047070204	机油泵齿轮总成	Gear	1	
11,07	VG1560070099	机油泵限压阀总成	Pressure limit valve	1	
11,08	VG1047070201	衬套	Bush	4	
11,09	Q150B1085	六角头螺栓	Screw	1	
11,10	Q340B10	六角螺母	Nut	1	
11,11	Q150B1075	六角头螺栓	Screw	4	
11,12	Q5210820	圆柱销	Cylinder pin	6	
11,13	Q150B1045	六角头螺栓	Screw	1	
11,14	Q218B1070	内六角螺栓	Screw	1	

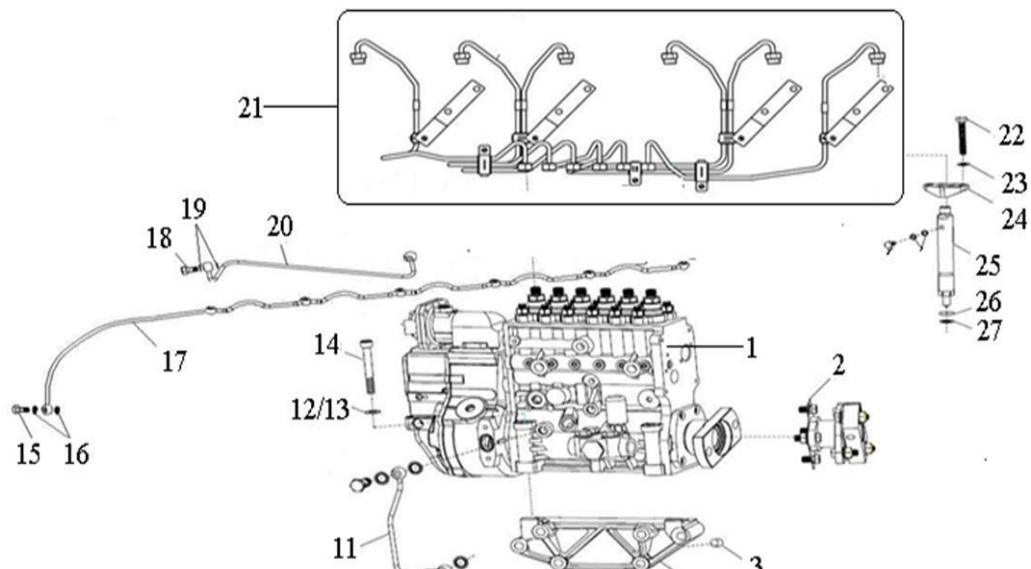
2.1.11HWA2 机油泵和机油滤清器/Oil Pump and Oil Filter



### 2.1.11HWA2 机油泵和机油滤清器/Oil Pump and Oil Filter

序号	零部件图号	名称	Part Name	数量	备注
No.	Part No.			Qty	Remark
12,00	VG14070055	机油泵垫片	Gasket	1	
13	VG140778	垫片	Gasket	1	
14	190003932025	鞍形弹性垫圈	Spring washer	2	
15	190003802523	六角头螺栓	Screw	2	
16	VG1800070054	集滤器总成	Suction pipe	1	
16	VG1800070052	集滤器总成	Suction pipe	1	for HH69/87/62
17	VG1500070097	主油道限压阀总成	Pressure limit valve	1	
18	190003932023	波形弹性垫圈	Spring washer	4	
19	190003862443	内六角圆柱头螺钉	Screw	2	
20	VG61000070005	旋装式机油滤芯总成	Oil filter	2	
21	VG1500070051	机油滤清器底座组件	Oil filter base asse.	1	
22	VG1500010334	机油冷却器(8片)	Oil radiator	1	
23	190003862419	内六角圆柱头螺钉	Screw	4	
24	190003932023	波形弹性垫圈	Spring washer	4	
25	VG1400010032	密封圈	Washer	2	
26	190003962051	轻型六角头圆柱螺塞	Plug	1	
27	VG2600010735	复合垫圈	Washer	1	
28	VG14070068	安全阀弹簧	Spring-for safety valve	1	
29	VG14070069	安全阀	Safety valve	1	
	VG1540110212	支撑块	Support block	2	

### 2.1.12HWA2 供油系/Fuel Supply System

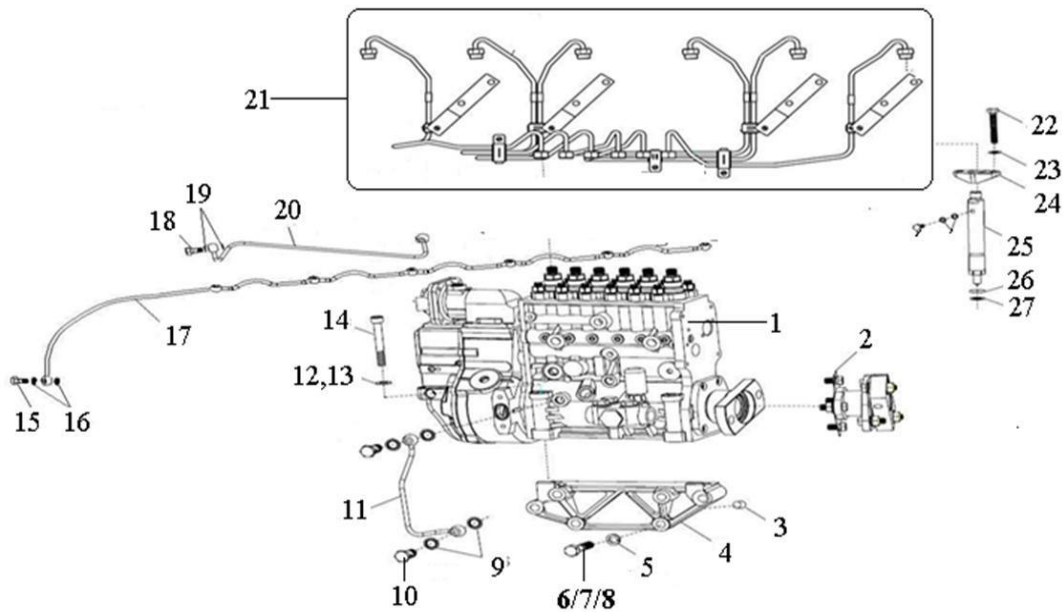




2.1.12HWA2 供油系/Fuel Supply System

序号 No.	零部件图号 Part No.	名称	Part Name	数量 Qty	备注 Remark
1	VG1560080023	喷油泵带K型调速器47	Fuel injector pump for WD615.47	1	FOR WD615.47
1	VG1560080022	喷油泵带K型调速器 69	Fuel injector pump for WD615.69	1	FOR WD615.69
1	VG1560080021	喷油泵带K型调速器87	Fuel injector pump for WD615.87	1	FOR WD615.87
1	VG1560080020	喷油泵带K型调速器 62	Fuel injector pump for WD615.62	1	FOR WD615.62
1,1	VG1095088010	输油泵总成配47/62泵	Fuel delivery pump for WD615.47/62	1	for WD615.47/62
1,1	VG1500080100	输油泵总成配87/69泵	Fuel delivery pump for WD615.87/69	1	for WD615.87/69
2	VG1560080300	联轴器总成	Coupling ass.	1	
2,01	VG1560080279	联轴器法兰组件	Coupling flange	1	
2,02	VG1560080219	弹性连接片	Flexible driving plate	12	
2,03	VG1560080273	衬套	Bush	8	
2,04	Q40012T16F9	小垫圈	Washer	8	
2,05	VG1560080271	垫圈	Washer	8	
2,06	Q150B1250TF2	六角头螺栓	Screw	2	
2,07	Q150B1235TF2	六角头螺栓	Screw	4	
2,08	Q150B1240TF2	六角头螺栓	Screw	2	
2,09	Q340B12T13F2	1型六角螺母	Nut	8	
2,10	VG1560080266	法兰	Flange	2	
2,11	VG1560080270	连接管	Connecting tube	1	
2,12	VG1560080194	角度调节板	Angle regulator plate	1	

2.1.12HWA2 供油系/Fuel Supply System

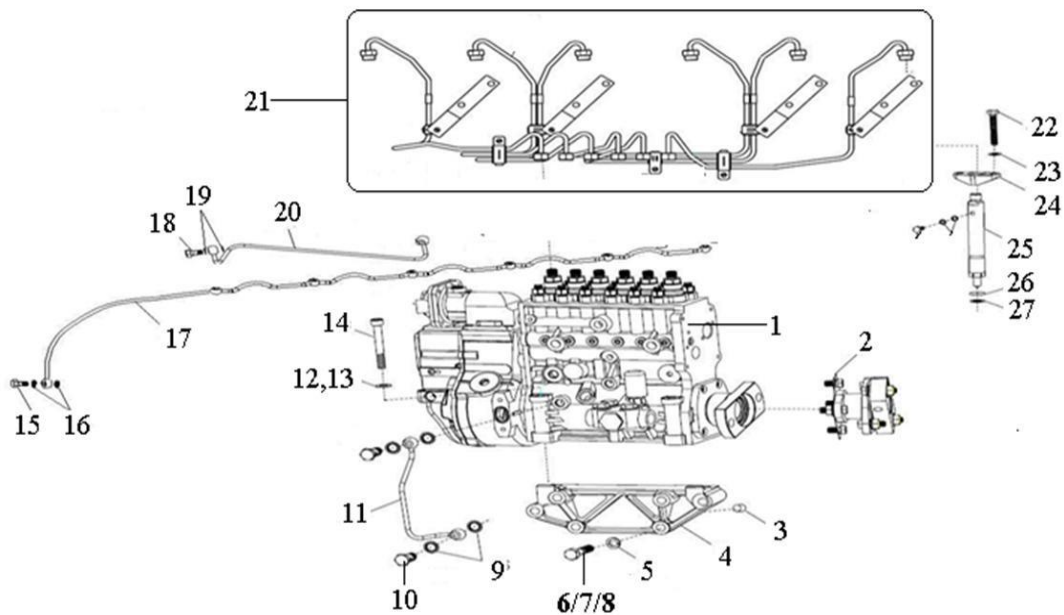


2.1.12HWA2 供油系/Fuel Supply System

序号	零部件图号	名称	Part Name	数量	备注
----	-------	----	-----------	----	----

No.	Part No.	名称	Part Name	Qty	Remark
2,13	VG1560080001	六角头螺栓	Screw	1	
3	190003901600	圆柱销	Cylinder pin	2	
4	VG1500080174	喷油泵托架	Bracket	1	
5	190003931142	弹簧垫圈	Spring washer	6	
6	Q150B1295	六角头螺栓	Screw	3	
7	Q150B1285	六角头螺栓	Screw	1	
8	Q150B1245	六角头螺栓	Screw	2	
9	VG2600080200	密封垫圈	Washer	14	
10	190003962621	空心螺栓	Female screw	7	
11	VG1560070025	润滑油回油管总成	Oil return tube	1	
12	190003930271	平垫圈	Washer	4	
13	VG18872339	自锁垫圈	Washer	4	
14	190003800571	六角头螺栓	Screw	4	
15	VG1500080090	空心螺栓	Female Screw	6	
16	VG9003080001	复合密封垫圈	Washer	12	
17	VG1500080095A	回油管总成	Fuel return line	1	
18	190003962612	空心螺栓	Female screw	1	
19	VG9003080004	复合密封垫圈	Washer	2	
20	VG1560080284	空气管	Air pipe	1	
21	VG1560080278A	高压油管组	Injection pipe	1	
22	VG2600080383	六角头螺栓	Screw	12	
23	190003932023	波形弹性垫圈	Spring washer	12	
24	VG1500080094A	紧固压板	Plate	6	

### 2.1.12HWA2 供油系/Fuel Supply System



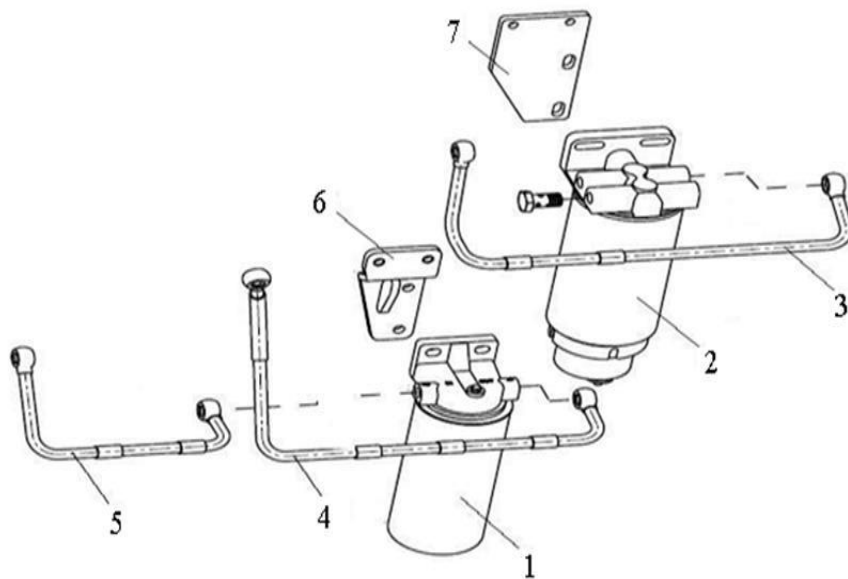
### 2.1.12HWA2 供油系/Fuel Supply System

序号	零部件图号	名称	Part Name	数量	备注
----	-------	----	-----------	----	----



1d	190003802523	六角头螺栓	Screw	2	
1e	190003932024	波形弹性垫圈	Spring washer	2	
1f	190003930012	大垫圈	Washer	2	
1g	VG14080739A	旋装式柴油细滤芯	fuel precision filter	1	
2	VG1560080016	旋装式燃油粗滤器总成	Fuel preliminary filter ass.	1	for HW/A7
2,1	VG1560080014	旋装式燃油粗滤器滤座	Base	1	for HW/A7
2,2	VG1047080011	滤芯和滤杯总成	Filter and cup	1	for HW/A7
2.2.1	VG1540080311	旋装式燃油粗滤器	Fuel preliminary filter	1	for HW/A7
2.2.2	VG1047080009	燃油粗滤器水杯	Cup	1	for HW/A7
2a	190003802532	六角头螺栓	Screw	2	
2b	190003931122	弹簧垫圈	Spring washer	2	
2c	190003935009	平垫圈	Washer	2	
2d	VG14080740A	旋装式燃油粗滤芯	Fuel preliminary filter	1	
3	VG1092080019	燃油管总成	Fuel pipe	1	for HW/A7
3	VG1560087018	燃油管总成	Fuel pipe	1	for HH69/87/62
4	VG1092080017	燃油管总成	Fuel pipe	1	for HW/A7
4	VG1560087017	燃油管总成	Fuel pipe	1	for HH69/87/62
5	VG1092080018	燃油管总成	Fuel pipe	1	for HW/A7

### 2.1. 13HWA2 燃油滤清器部分/Fuel Filter



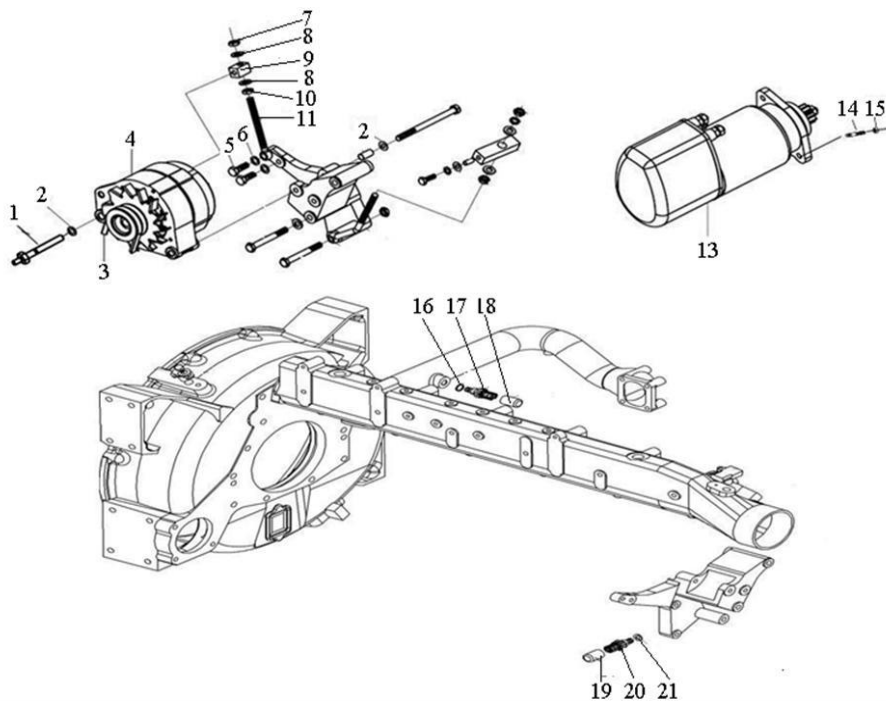
### 2.1. 13HWA2 燃油滤清器部分(M+H)/Fuel Filter

序号	零部件图号	名称	Part Name	数量	备注
No.	Part No.			Qty	Remark
5a	VG2600080200	密封垫圈	Washer	4	for HW/A7
6	VG1092080026	燃油精滤器托架	Bracket	1	for HW/A7
7	VG1540080027	粗滤支架	Bracket	1	for HW/A7
7	VG1560080094	支架	Bracket	1	for HH/ST
	VG1047080015	燃油粗滤器护套	Protective sleeve	1	



6	190003930271	平垫圈	Washer	1	
7	190003888452	螺母	Nut	1	
8	190003935125	平垫圈	Washer	2	
9	VG1500090027	拉紧块	Block	1	
10	190003871305	1型六角螺母	Nut	1	
11	VG1500090039	拉紧螺栓	Screw	1	
12	VG2600090288	压紧块	Press block	1	
13	VG1560090001	减速型起动机	Starter	1	
13	VG1560090007	减速型起动机(三菱)	Starter (made by Mitsubishi)	1	Option
14	190003813532	双头螺柱	Stud	3	
15	190003888452	螺母	Nut	3	
16	VG9003080005	复合密封垫圈	Washer	1	

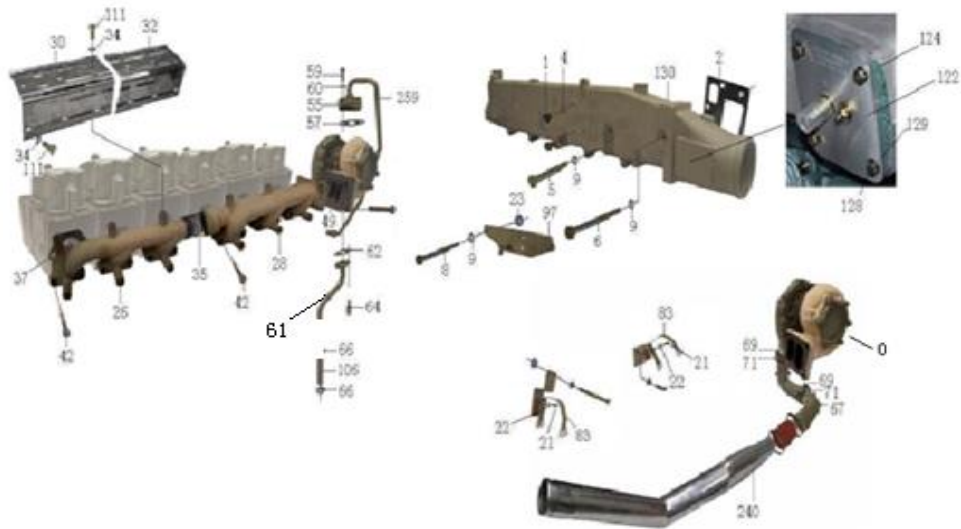
2.1.14HWA2 电机及传感器/Alternator、Starter & Sensor



2.1.14HWA2 电机及传感器/Alternator、Starter & Sensor

序号 No.	零部件图号 Part No.	名称	Part Name	数量 Qty	备注 Remark
17	VG1500090061	水温表传感器	Water temperature sensor	1	
18	VG2600090318	水温传感器罩	Cover	1	
19	VG1095090139	机油压力传感器罩	Cover	1	
20	VG1092090311	电子机油压力传感器	Oil pressure sensor	1	for HH87/HW
20	VG1500090060	机电式机油压力传感器	Oil pressure sensor	1	for HH69/62
21	VG2600080275	复合密封垫圈	Washer	1	


2.1. 15HWA2 进排气系统/ Intake and Exhaust Manifold

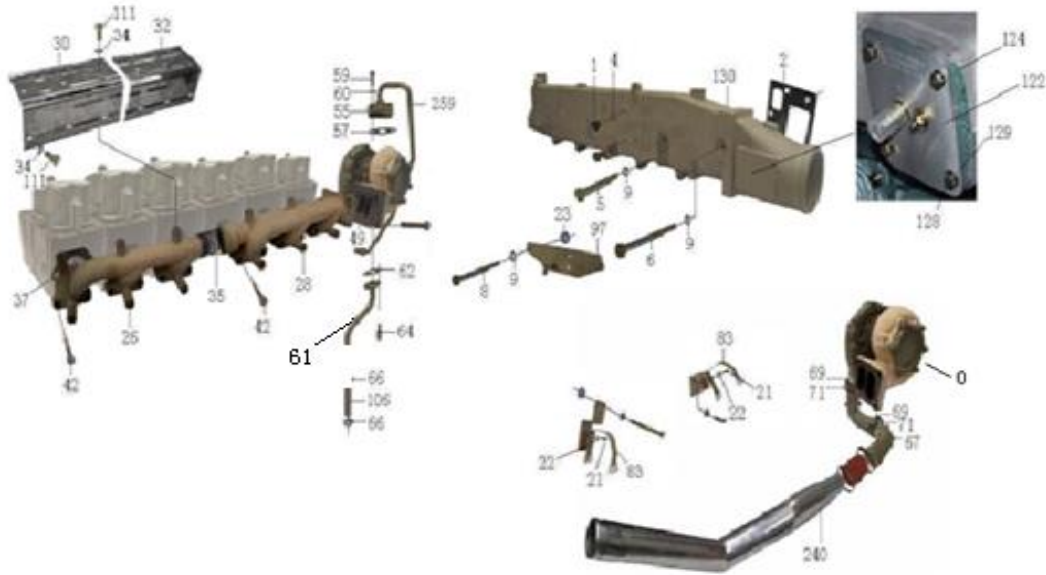


2.1. 15HWA2 进排气系统/ Intake and Exhaust Manifold

序号 No.	零部件图号 Part No.	名称	Part Name	数量 Qty	备注 Remark
0	VG1560118229	废气涡轮增压器	Turbo supercharger	1	for HW47/69
0	VG1560118899	废气涡轮增压器	Turbo supercharger	1	for HW87
0	VG1560118896	废气涡轮增压器	Turbo supercharger	1	for HW62
0	VG2600118900	废气涡轮增压器	Turbo supercharger	1	for HH87/ST87 with PTO
0	VG1062110001	废气涡轮增压器	Turbo supercharger	1	for HH62
1	190003962014	六角头螺塞	plug	1	
2	VG1500110024	进气管垫片	Joint	6	
4	VG9003080003	复合密封垫圈	washer	1	
5	190003800465	六角头螺栓	screw	6	
6	VG14110064	进气管紧固螺栓	screw	4	
8	190003800497	六角头螺栓	screw	2	
9	190003932023	波形弹性垫圈	spring washer	12	
21	190003802411	六角头螺栓	screw	2	
22	190003932023	波形弹性垫圈	spring washer	2	
23	VG609E110036	调整垫圈	adjust washer	6	
25	190003932023	波形弹性垫圈	spring washer	2	
26	VG2600111137	前排气歧管	Exhaust manifold - front	1	
26	VG2600111290	前排气歧管	Exhaust manifold - front	1	for HH/ST
28	VG1500110123	后排气歧管	Exhaust manifold - rear	1	

30	VG2600111142	前隔热罩	Cover - front	1	
30	VG2600111144	前隔热罩	Cover - front	1	for HH/ST
32	VG2600111143	后隔热罩	Cover - rear	1	
34	190003937282	大垫圈	washer	12	
35	VG260110162	排气管密封环	ring	4	
37	VG1560110111	排气管垫片	Gaster	6	

### 2. 1. 15HWA2 进排气系统/ Intake and Exhaust Manifold

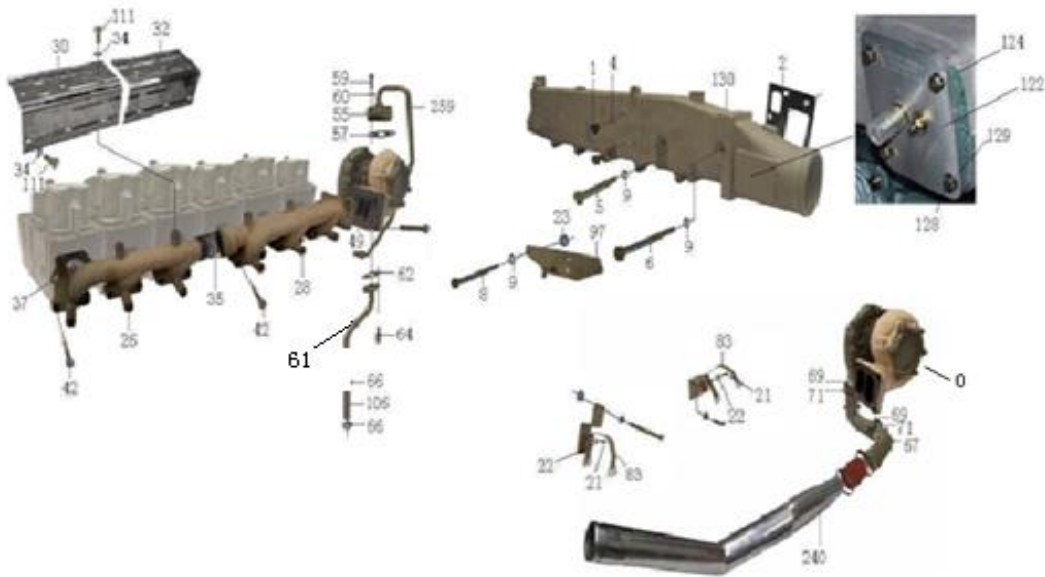


### 2. 1. 15HWA2 进排气系统/ Intake and Exhaust Manifold

序号	零部件图号	名称	Part Name	数量	备注
No.	Part No.			Qty	Remark
42	VG2600111052	排气管紧固螺栓	Screw	12	
42	VG1560110104	排气管紧固螺栓	Screw	12	for HH/ST
46	190003888470	自锁螺母	nut	4	
49	VG1560110210	增压器密封垫	Gasket	1	for HW47/69/HH/ST
49	VG1500119011	增压器密封垫	Gasket	1	for HW87/62
55	VG1560110152	进油管法兰	Flange	1	
57	VG609E110050	进油管垫片	Gasket	1	
59	190003862428	内六角圆柱头螺钉	Screw	2	
60	VG188250083	自锁垫圈	Washer	4	
61	VG1560079003	回油管总成	Pipe - oil return	1	for HW47/69
61	VG1560079006	回油管总成	Pipe - oil return	1	for HW87/62
61	VG1560079024	回油管总成	Pipe - oil return	1	for HH69
61	VG1560070046	回油管总成	Pipe - oil return	1	for HH87/62
62	VG2600110048	回油管法兰垫片	Washer	1	
64	VG1460070014	回油管螺栓	Screw	2	
66	190003989340	软管卡箍	Hose clip	2	
67	VG1800110045	连接弯管	Tube	1	for HW
67	VG2600111078	连接弯管	Tube	1	for HW47/69
67	VG1500119016	连接弯管	Tube	1	for HW87/62
67	VG2600111141	连接弯管用于后取力	Tube for engine with PTO	1	Optional for PTO

67	VG1095110009	连接弯管	Tube	1	for HH
69	VG1560110226	夹子	Clip	2	
71	VG190320035	密封圈	Washer	2	

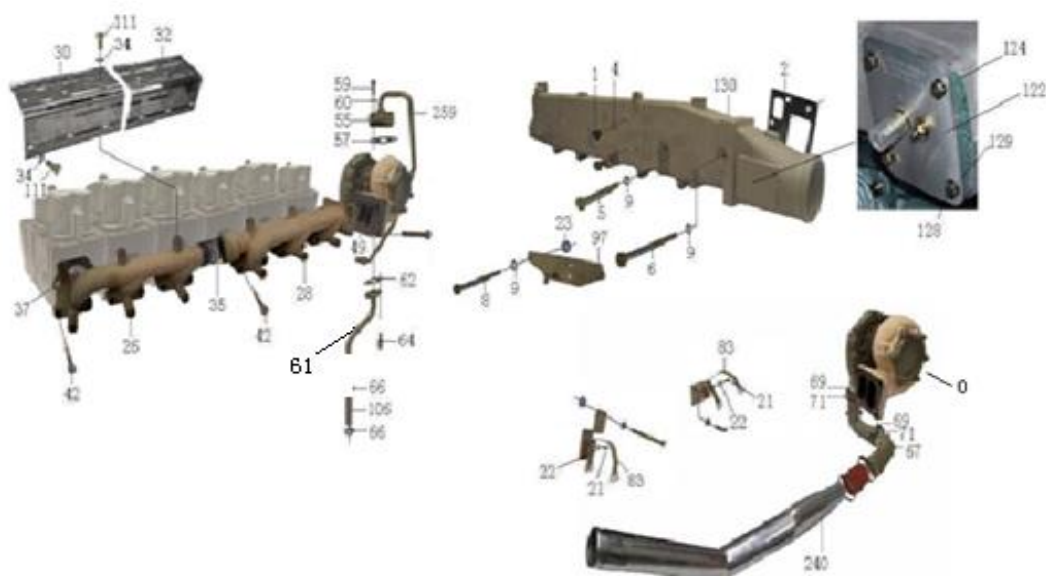
### 2.1. 15HWA2 进排气系统/ Intake and Exhaust Manifold



### 2.1. 15HWA2 进排气系统/ Intake and Exhaust Manifold

序号 No.	零部件图号 Part No.	名称	Part Name	数量 Qty	备注 Remark
83	VG1560110021	卡箍带	Clamp	2	
85	VG1700550013	张紧销	Pin	2	
87	VG209190017	拉紧销	Pin	2	
93	190003932023	波形弹性垫圈	Spring washer	2	
94	190003802419	六角头螺栓	Screw	4	
95	190003802415	六角头螺栓	Screw	2	
96	190003932023	波形弹性垫圈	Spring washer	6	
97	VG9100570019	悬臂总成	bracket ass.	1	
99	VG9100570018	悬臂	bracket	1	
100	VG9100570017	弯板	plate	1	
101	VG9000570035	轴销	shaft pin	1	
106	VG2600070071	增压器回油用软管	Pipe	1	
111	VG1500110963	耐热螺栓	Screw	12	
111	VG2600110962	耐热螺栓	Screw	12	for HH/ST
113	VG2600110668	增压器排气口堵盖	Cover	1	
122	VG2600110458	进气管盖板	Cover	1	for HW
124	VG2600110457	进气管盖板垫片	Gasket	1	for HW
128	190003802331	六角头螺栓	Screw	4	for HW
129	190003932008	波形弹性垫圈B6	Washer	4	
130	VG2600110812	进气管总成(带进气管电加热系统)	Intake manifold ass.	1	
130	VG2600110811	进气管总成	Intake manifold ass.	1	for HH
130	VG2600110810	进气管总成	Intake manifold ass.	1	for ST
132	VG2600110688	进气管	Intake manifold	1	

## 2.1.15HWA2 进排气系统/ Intake and Exhaust Manifold

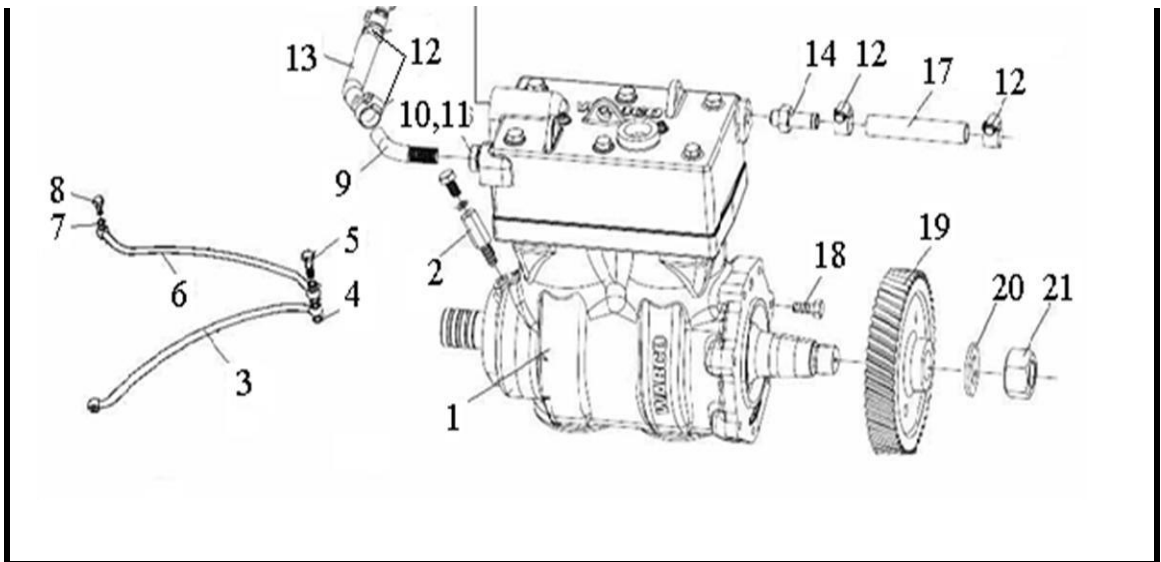


## 2.1.15HWA2 进排气系统/ Intake and Exhaust Manifold

序号 No.	零部件图号 Part No.	名称	Part Name	数量 Qty	备注 Remark
133	VG2600110455	盖板	Cover	1	
136	VG2600110456	垫片	Gasket	1	
139	190003931102	弹簧垫圈	spring washer	3	
140	190003802432	六角头螺栓	Screw	3	
163	VG2600111429	双头螺柱	Stud	4	
183	VG9003980003	强力卡箍	Clip	2	
195	AZ9003862462	内六角圆柱头螺钉	Screw	2	
200	190003802411	六角头螺栓	Screw	2	
209	VG29108B	堵盖	Cover	2	
211	VG29129A	堵盖	Cover	1	
218	VG29130A	堵盖	Cover	1	
229	VG1500119215	卡箍	Clip	1	
231	Q33408	1型全金属六角锁紧螺母	Nut	1	
232	Q150B0855	六角头螺栓	Screw	1	
233	Q40108	平垫圈	Washer	1	
234	Q40308	弹簧垫圈	Spring washer	1	
240	VG1047110104	中冷管	Intercooling tube	1	for HW
240	VG1034110011	中冷管	Intercooling tube	1	for HH 69
240	VG1034110013	中冷管	Intercooling tube	1	for HH 87
244	VG1047110103	硅胶管	Hose	1	
248	VG1047110102	支架	Bracket	1	
255	VG1047110105	固定板	Plate	1	
259	VG1092110046	增压器进油管总成	Hose - oil intake	1	for HW87/62

## 2.1.15HWA2 进排气系统/ Intake and Exhaust Manifold





### 2. 1. 16HWA2 双缸空压机/Compressor

序号 No.	零部件图号 Part No.	名称	Part Name	数量 Qty	备注 Remark
1	VG1560130080A	双缸水冷空压机	Water cooling air compressor	1	
2	VG1560070051	过渡接头	Connection	2	
3	VG1560070060	高压油泵润滑油管总成	Tube ass.	1	
4	VG9003080003	复合密封垫圈	Washer	3	
5	VG1560070012	空心螺栓	Female Screw	1	
6	VG1560070050	空压机润滑油管总成	Tube ass.	1	
7	VG9003080003	复合密封垫圈	Washer	2	
8	190003962607	空心螺栓	Female Screw	1	
9	VG1560060012	空压机进水管接头	Connection - water intake	1	
10	VG2600080200	密封垫圈	Washer	1	
11	Q351B14	六角薄螺母	Nut	1	
12	190003989336	软管卡箍	Hose clip	4	
13	VG1560060019	国II空压机进水管	Pipe - water intake	1	
14	VG2600130026	水冷空压机水管接头	Connection	2	
15	VG1560130035	空压机进气管接头	Connection - air intake	1	
16	190003559778	六角螺母	Nut	1	
17	VG1560060018	空压机出水管	Pipe - water outtake	1	
18	Q1860820TF2	六角法兰面螺栓	Screw	7	
19	VG1560130064	喷油泵齿轮	Gear	1	
20	VG409020045	垫片	Shim	1	
21	VG2600130045	六角螺母	Nut	1	
	VG29116	堵盖	Cover	1	

### 2. 1. 17HWA2 油底壳/Oil Pan

